

Proffered[®]

C A R B I D E



USA Headquarters

Long Beach, California
5855 Obispo Ave., Long Beach, CA 90805
Tel. 562-808-8000
Fax: 562-808-8137
losangeles@brightonbest.com

Global Headquarters

Tainan, Taiwan
No. 122, Yi-Lin Road, Rende Township, Tainan, 71752 Taiwan
Tel. 886-6-270-1756
Fax: 886-6-270-6356
bbi-team@mail.tachen.com.tw



**BRIGHTON-BEST
INTERNATIONAL**



Proferred®

CARBIDE



- ◆ Rotary Hammer Drill
- ◆ Serrated Head Geometry
- ◆ Self Centering Chisel Point
- ◆ ANSI Specification
- ◆ Tungsten Carbide Tip
- ◆ Copper / Silver Brazing
- ◆ Fastest Dust Removal
- ◆ Fastest Drilling Speeds
- ◆ Clean Round Holes
- ◆ Less Vibration
- ◆ Polished Finish
- ◆ Industrial Quality

- Concrete
- Brick
- Stone
- Masonry
- Aggregates



**SOLD INDIVIDUALLY.
1 PER CLIP.**



SDS-PLUS Rotary Hammer Drills

Part #	Size	X	OAL	Drilling	Head	Qty.
C10009	5/32"	X	4-1/4"	2"	4-PLUS	1
C10010	5/32"	X	6-1/4"	4"	4-PLUS	1
C10020	3/16"	X	4-1/2"	2"	4-PLUS	1
C10030	3/16"	X	6-1/2"	4"	4-PLUS	1
C10031	3/16"	X	8-1/2"	6"	4-PLUS	1
C10032	3/16"	X	12-1/2"	10"	4-PLUS	1
C10033	7/32"	X	6-1/2"	4"	4-PLUS	1
C10034	7/32"	X	8-1/2"	6"	4-PLUS	1
C10035	7/32"	X	10-1/2"	8"	4-PLUS	1
C10036	7/32"	X	16"	14"	4-PLUS	1
C10040	1/4"	X	4-1/2"	2"	4-PLUS	1
C10050	1/4"	X	6-1/2"	4"	4-PLUS	1
C10051	1/4"	X	8-1/2"	6"	4-PLUS	1
C10052	1/4"	X	10-1/2"	8"	4-PLUS	1
C10053	1/4"	X	14"	12"	4-PLUS	1
C10054	1/4"	X	16"	14"	4-PLUS	1
C10060	5/16"	X	6-1/2"	4"	4-PLUS	1
C10070	5/16"	X	12-1/2"	10"	4-PLUS	1
C10080	3/8"	X	6-1/2"	4"	4-PLUS	1
C10090	3/8"	X	10-1/2"	8"	4-PLUS	1
C10100	3/8"	X	12-1/2"	10"	4-PLUS	1
C10101	3/8"	X	18"	16"	4-PLUS	1
C10102	3/8"	X	24"	22"	4-PLUS	1
C10110	7/16"	X	6-1/2"	4"	4-PLUS	1
C10111	7/16"	X	12-1/2"	10"	4-PLUS	1
C10120	1/2"	X	6-1/2"	4"	4-PLUS	1
C10130	1/2"	X	10-1/2"	8"	4-PLUS	1
C10140	1/2"	X	12-1/2"	10"	4-PLUS	1
C10141	1/2"	X	18"	16"	4-PLUS	1
C10142	1/2"	X	24"	22"	4-PLUS	1
C10150	9/16"	X	6-1/4"	4"	4-PLUS	1
C10160	9/16"	X	12-1/4"	10"	4-PLUS	1
C10170	5/8"	X	6-1/4"	4"	4-PLUS	1
C10171	5/8"	X	8-1/4"	6"	4-PLUS	1
C10190	5/8"	X	12-1/4"	10"	4-PLUS	1
C10191	5/8"	X	18"	16"	4-PLUS	1
C10192	5/8"	X	24"	22"	4-PLUS	1
C10193	3/4"	X	8"	6"	4-PLUS	1
C10220	3/4"	X	12"	10"	4-PLUS	1
C10221	3/4"	X	18"	16"	4-PLUS	1
C10222	3/4"	X	24"	22"	4-PLUS	1
C10223	7/8"	X	8"	6"	4-PLUS	1
C10230	7/8"	X	10"	8"	4-PLUS	1
C10231	7/8"	X	12"	10"	4-PLUS	1
C10240	1"	X	10"	8"	4-PLUS	1
C10241	1"	X	18"	16"	4-PLUS	1



Proffered® C A R B I D E



**BRIGHTON-BEST
INTERNATIONAL**



SDS-MAX® Rotary Hammer Drills



Part #	Size	X	OAL	Drilling	Head	Qty.
C13100	3/8"	X	13"	7-1/2"	REGULAR	1
C13102	1/2"	X	13"	7-1/2"	REGULAR	1
C13104	1/2"	X	21"	15-1/2"	REGULAR	1
C13106	9/16"	X	21"	15-1/2"	REGULAR	1
C13108	5/8"	X	13"	7-1/2"	X-CUTTER	1
C13110	5/8"	X	21"	15-1/2"	X-CUTTER	1
C13112	5/8"	X	36"	30-1/2"	X-CUTTER	1
C13114	11/16"	X	21"	15-1/2"	X-CUTTER	1
C13116	3/4"	X	13"	8"	X-CUTTER	1
C13118	3/4"	X	21"	17"	X-CUTTER	1
C13120	3/4"	X	36"	31"	X-CUTTER	1
C13122	7/8"	X	13"	8"	X-CUTTER	1
C13124	7/8"	X	21"	17"	X-CUTTER	1
C13126	7/8"	X	36"	31"	X-CUTTER	1
C13128	1"	X	13"	8"	X-CUTTER	1
C13130	1"	X	21"	17"	X-CUTTER	1
C13132	1"	X	36"	31"	X-CUTTER	1
C13134	1-1/8"	X	17"	12"	X-CUTTER	1
C13136	1-1/8"	X	21"	17"	X-CUTTER	1
C13138	1-1/8"	X	36"	31"	X-CUTTER	1
C13140	1-1/4"	X	15"	10"	X-CUTTER	1
C13142	1-1/4"	X	23"	18"	X-CUTTER	1
C13144	1-3/8"	X	23"	18"	X-CUTTER	1
C13146	1-1/2"	X	23"	18"	X-CUTTER	1
C13148	1-3/4"	X	23"	18"	X-CUTTER	1
C13150	2"	X	23"	18"	X-CUTTER	1

- ◆ Rotary Hammer Drill
- ◆ Industrial Quality
- ◆ Tungsten Carbide Tip
- ◆ Copper / Silver Brazing
- ◆ Fastest Dust Removal
- ◆ Fastest Drilling Speeds
- ◆ Heat Treated Body
- ◆ Clean Round Holes
- ◆ Less Vibration
- ◆ Polished Finish
- ◆ ANSI Specification

- Reinforced Concrete
- Brick
- Stone
- Masonry
- Aggregates



**SOLD INDIVIDUALLY.
1 PER TUBE.**

Bosch® License

WILL PENETRATE THROUGH REINFORCED CONCRETE



Proferred® C A R B I D E



- ◆ Rotary Hammer Drill
- ◆ STOP - Lip Prevents Over-Drilling
- ◆ Drill Exact Depth For Drop-In Anchor
- ◆ Less Likely to Hit Rebar
- ◆ ANSI Specification



- Concrete
- Brick
- Stone
- Masonry
- Aggregates



For Drop-in Anchors



GERMANY



ANSI



SDS-PLUS + STOP Rotary Hammer Bit

Part #	Size	Drill Depth	Anchor Size	Qty.
C12100	3/8"	1-1/16"	1/4"	1
C12102	1/2"	13/16"	3/8" Short	1
C12104	1/2"	1-11/16"	3/8"	1
C12106	5/8"	1-3/16"	1/2" Short	1
C12108	5/8"	2-1/16"	1/2"	1

Half Flat Shank



Concrete Bits - FOR CONCRETE-SCREWS

Part #	Size	x	OAL	Screw	Qty.
R62004	5/32"	X	3-1/2"	12	25
R62005	5/32"	X	4-1/2"	12	25
R62006	5/32"	X	5-1/2"	12	25
R62008	3/16"	X	3-1/2"	14	25
R62003	3/16"	X	4-1/2"	14	25
R62001	3/16"	X	5-1/2"	14	25
R62002	3/16"	X	6-3/4"	14	25
R62009	3/16"	X	7-5/8"	14	25

- ◆ Industrial Quality
- ◆ Tungsten Carbide Tip
- ◆ Used for 5/32" Screws and 3/16" Screws

FOR USE WITH CONCRETE-SCREW SLEEVE

Each concrete-screw carbide drill bit is precisely ground to match a certain tolerance to assure proper hole diameter and to achieve maximum thread holding power. The flat on the shank fits all drill adapters. The drill bit is specially heat treated to make it very durable.



5/16" HEX SHOULDER

SDS-HEX Bits - FOR CONCRETE-SCREWS

Part #	Size	x	OAL	Drilling	Qty.
C19200	5/32"	X	5"	2-1/2"	1
C19201	5/32"	X	7"	4-1/2"	1
C19100	3/16"	X	5"	2-1/2"	1
C19101	3/16"	X	7"	4-1/2"	1



GERMANY

- ◆ Industrial Quality
- ◆ Special Tungsten Carbide Tip
- ◆ Copper / Silver Brazing
- ◆ Polished Finish
- ◆ Used for 5/32" Screws and 3/16" Screws

FOR USE WITH CONCRETE-SCREW SLEEVE

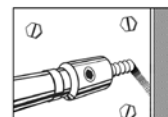
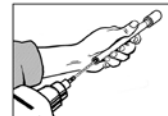
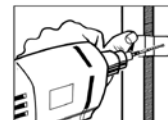
SDS-HEX Rotary Hammer drill bits are specifically designed for concrete-screw installation. These SDS bits have a special 5/16" HEX shoulder for direct use with concrete screw installation sleeves, eliminating the need for drill adapters. The benefit of using an SDS-Plus machine instead of a standard rotation drill is 2-3X faster performance, especially in harder concretes. **SEE BELOW FOR INSTALLATION KIT**

Installation Kit

Part #	Description
C99010	Installation Kit

INCLUDES:

- 5/32" x 7" SDS-PLUS Hex Bit
- 3/16" x 7" SDS-PLUS Hex Bit
- 1/4" Magnetic Driver
- 5/16" Magnetic Driver
- Phillips Bit Adapter
- Masonry Drill Adapter
- 6-1/2" Sleeve
- 1/8" Hex Key
- Phillips #2 x 1" Insert
- Phillips #3 x 1" Insert



- ◆ Red Case
- ◆ Black Hardware

This Installation Kit is Suitable for both Standard Concrete Bits & SDS-HEX Rotary Hammer Bits.